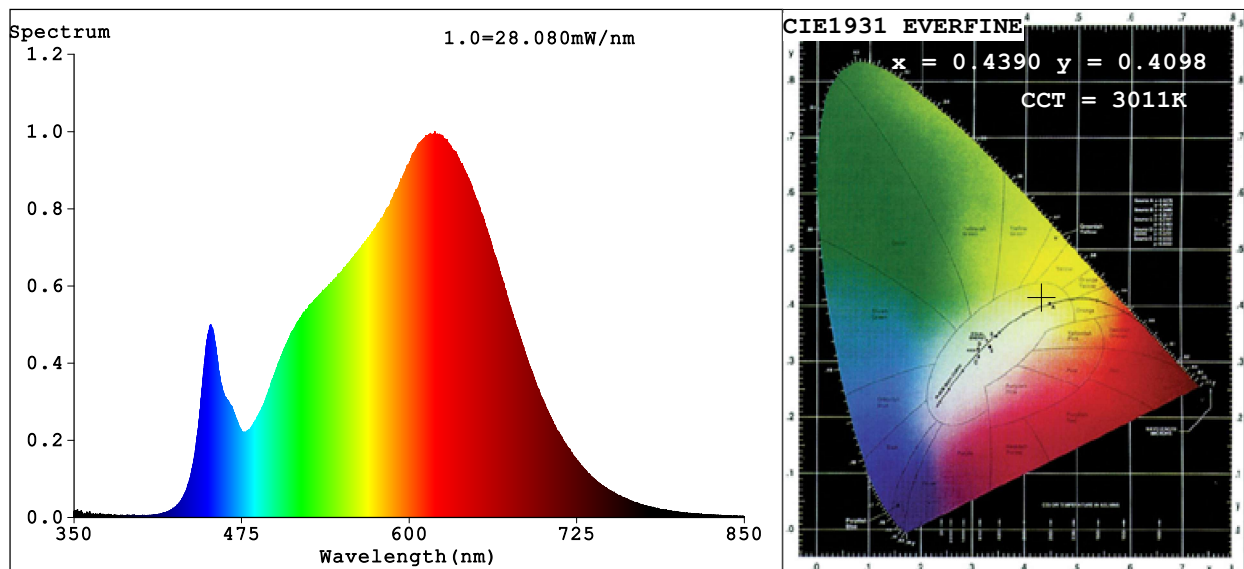


## Spectrum Test Report



### Color Parameters:

Chromaticity Coordinate:  $x=0.4390$   $y=0.4098$   $u'=0.2495$   $v'=0.5239$

CCT=3011K (Duv=0.0020) Dominant WL:Ld =582.1nm Purity=54.8%

Ratio:R=24.2% G=73.0% B=2.8%; Peak WL:Lp=619.1nm FWHM=163.5nm

Render Index:Ra=93.1 CRI=90.0 TM30:Rf=92 Rg=98

R1 =93 R2 =96 R3 =98 R4 =94 R5 =93 R6 =95 R7 =93

R8 =83 R9 =59 R10=90 R11=95 R12=79 R13=94 R14=98 R15=89

### Photo Parameters:

Flux = 1397 lm Eff. : 45.00 lm/W Fe = 4.778 W

### Electrical parameters:

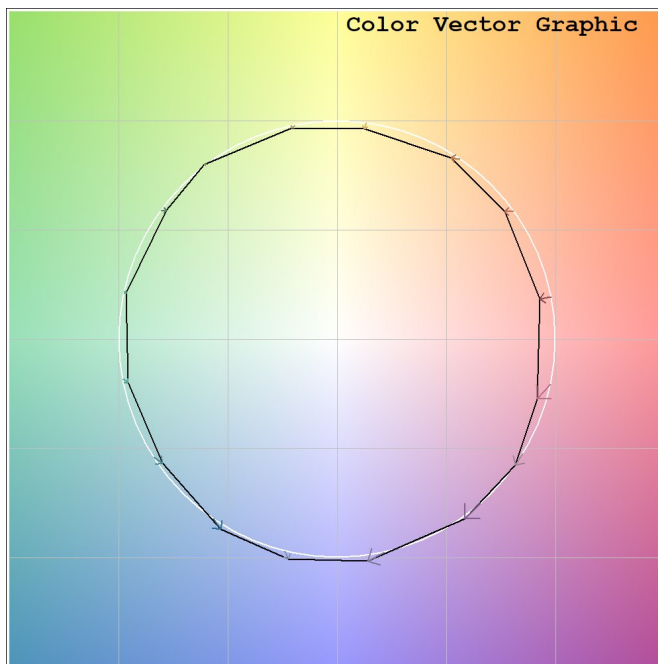
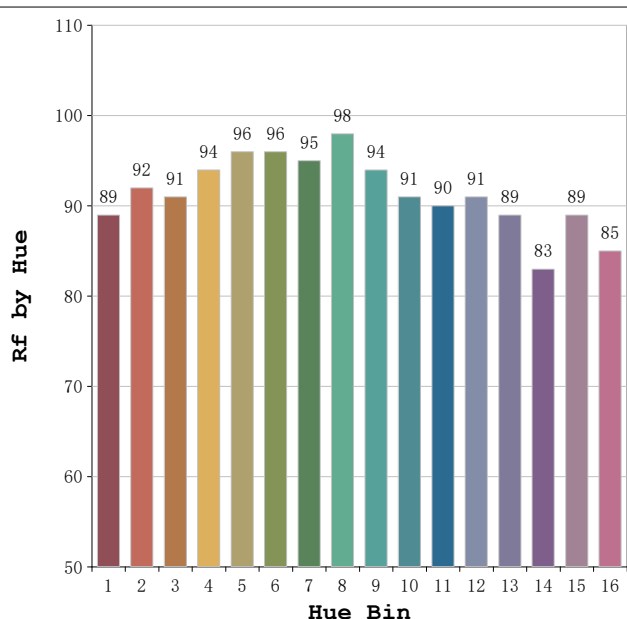
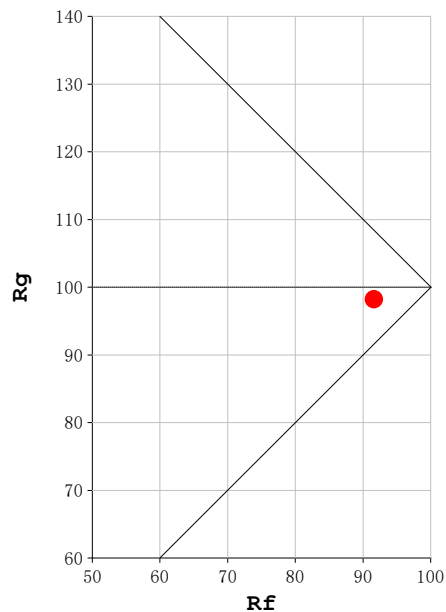
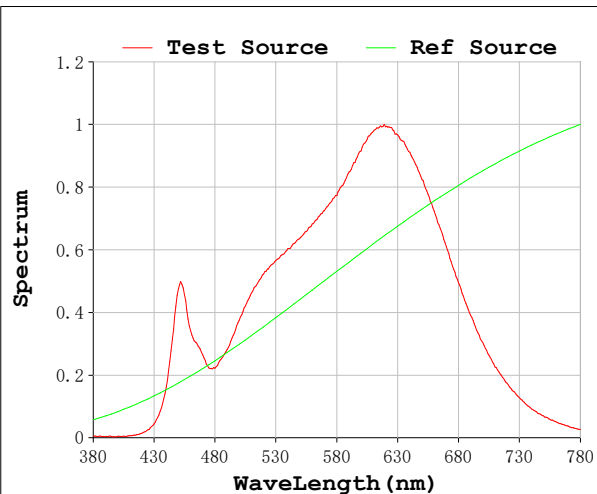
V = 230.06 V I = 0.1410 A P = 31.06 W PF = 0.9576

Status: Integral T = 888 ms Ip = 43941 (67%)

Model:Spotia Zomm CTT negro  
 Tester:Sergio Carneros  
 Temperature:20Deg  
 Manufacturer:Luz Negra

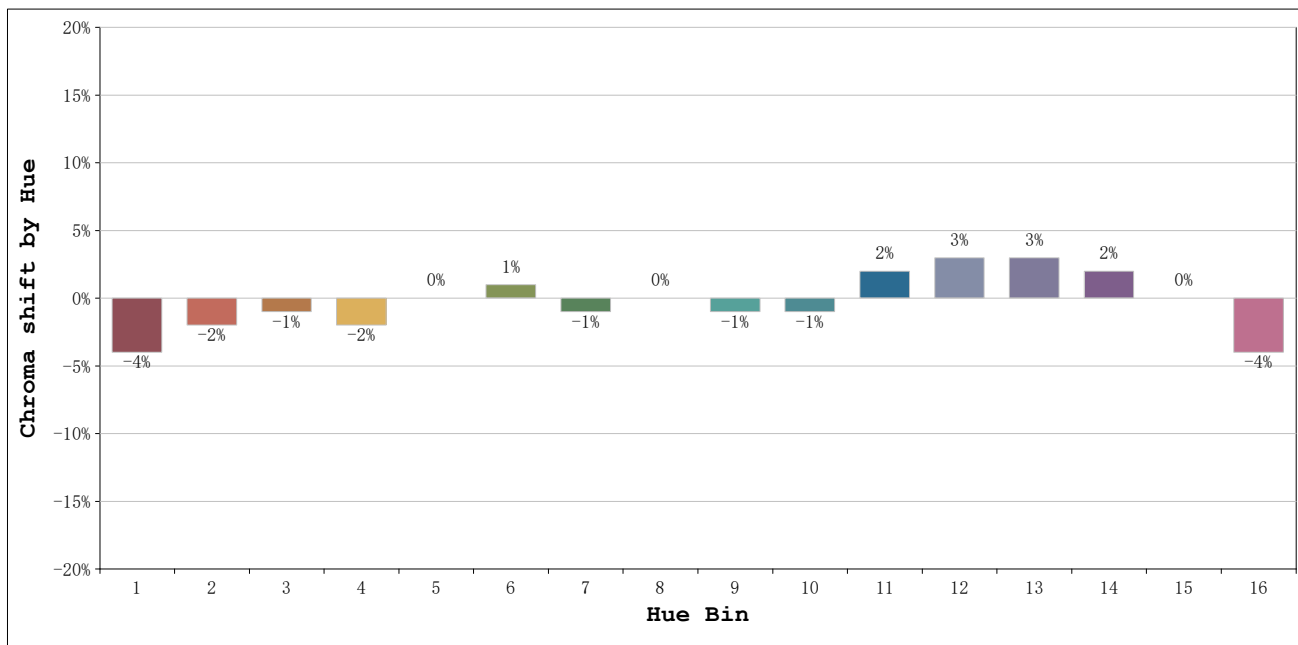
Number:3000K 20° Panal de abeja  
 Date:2026-03-23 08:44:45  
 Humidity:50%  
 Remarks:1 unidad

**Rf: 92**      **CCT: 3011 K**      **u': 0.2495**  
**Rg: 98**      **Duv: 0.0020**      **v': 0.5239**



Model:Spotia Zomm CTT negro  
 Tester:Sergio Carneros  
 Temperature:20Deg  
 Manufacturer:Luz Negra

Number:3000K 20° Panal de abeja  
 Date:2026-03-23 08:44:45  
 Humidity:50%  
 Remarks:1 unidad

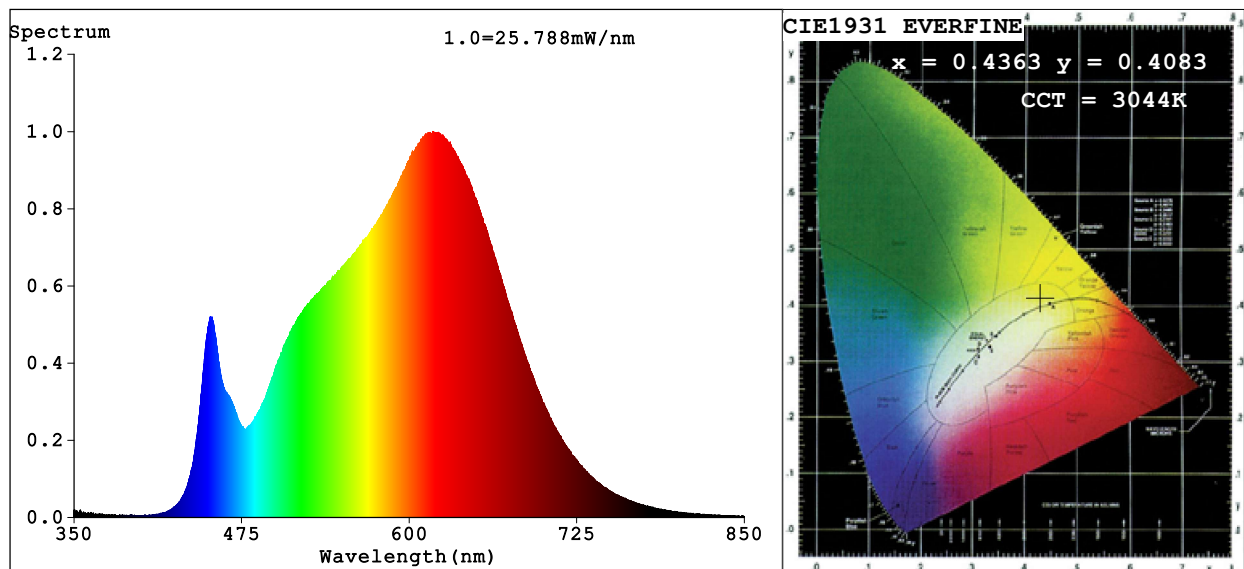


			Graphic shift(%)	
Hue Bin	Hue Angle	Rf	Chroma	Hue
1	0.0° - 22.5°	89	-4	0
2	22.5° - 45.0°	92	-2	2
3	45.0° - 67.5°	91	-1	4
4	67.5° - 90.0°	94	-2	0
5	90.0° - 112.5°	96	0	2
6	112.5° - 135.0°	96	1	1
7	135.0° - 157.5°	95	-1	-1
8	157.5° - 180.0°	98	0	0
9	180.0° - 202.5°	94	-1	2
10	202.5° - 225.0°	91	-1	4
11	225.0° - 247.5°	90	2	5
12	247.5° - 270.0°	91	3	2
13	270.0° - 292.5°	89	3	-7
14	292.5° - 315.0°	83	2	-9
15	315.0° - 337.5°	89	0	-5
16	337.5° - 360.0°	85	-4	-7

Model:Spotia Zomm CTT negro  
 Tester:Sergio Carneros  
 Temperature:20Deg  
 Manufacturer:Luz Negra

Number:3000K 20° Panal de abeja  
 Date:2026-03-23 08:44:45  
 Humidity:50%  
 Remarks:1 unidad

## Spectrum Test Report



### Color Parameters:

Chromaticity Coordinate:  $x=0.4363$   $y=0.4083$   $u'=0.2484$   $v'=0.5229$   
 CCT=3044K (Duv=0.0018) Dominant WL:Ld =582.0nm Purity=53.5%  
 Ratio:R=24.0% G=73.1% B=2.9%; Peak WL:Lp=617.7nm FWHM=164.3nm  
 Render Index:Ra=93.1 CRI=90.0 TM30:Rf=91 Rg=98  
 R1 =93 R2 =96 R3 =98 R4 =94 R5 =93 R6 =95 R7 =93  
 R8 =82 R9 =59 R10=90 R11=95 R12=79 R13=94 R14=98 R15=89

### Photo Parameters:

Flux = 1298 lm Eff. : 42.10 lm/W Fe = 4.425 W

### Electrical parameters:

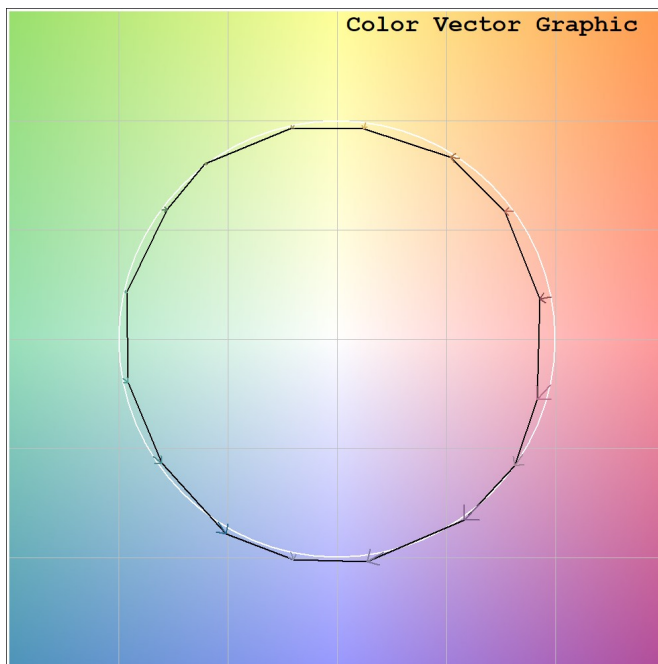
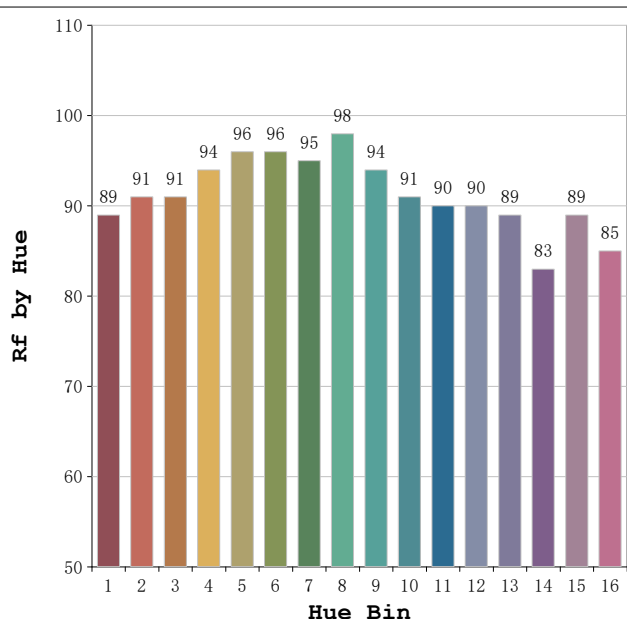
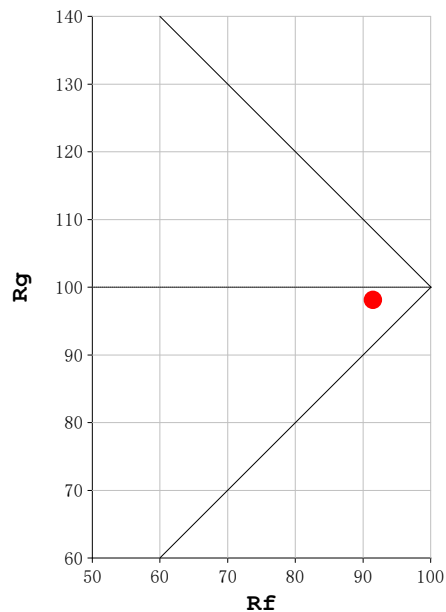
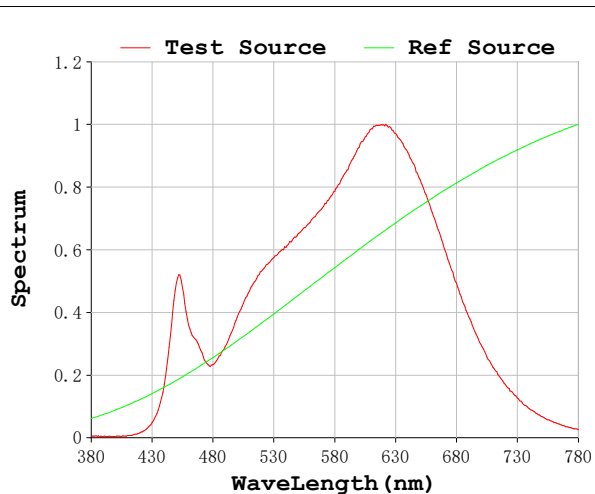
V = 230.08 V I = 0.1400 A P = 30.83 W PF = 0.9573

Status: Integral T = 888 ms Ip = 40629 (62%)

Model:Spotia Zomm CTT negro  
 Tester:Sergio Carneros  
 Temperature:20Deg  
 Manufacturer:Luz Negra

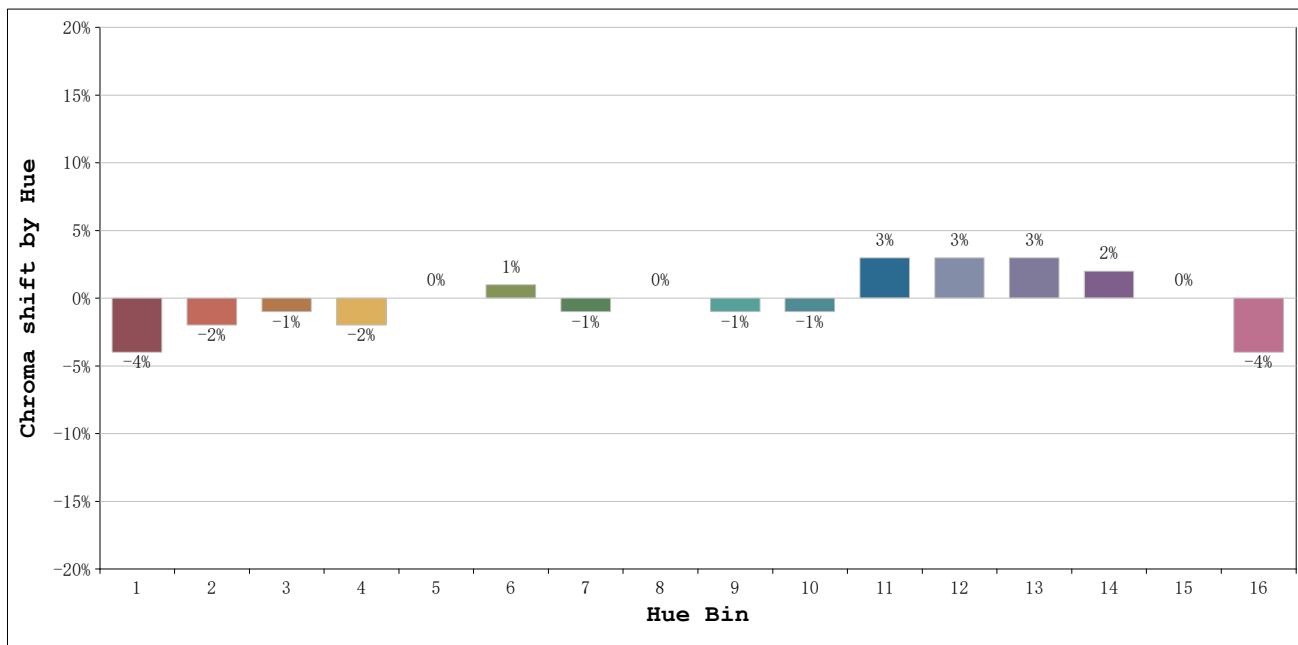
Number:3000K 50° Panal de abeja  
 Date:2026-03-23 08:45:47  
 Humidity:50%  
 Remarks:1 unidad

**Rf: 91**      **CCT: 3044 K**      **u': 0.2484**  
**Rg: 98**      **Duv: 0.0018**      **v': 0.5229**



Model:Spotia Zomm CTT negro  
 Tester:Sergio Carneros  
 Temperature:20Deg  
 Manufacturer:Luz Negra

Number:3000K 50° Panal de abeja  
 Date:2026-03-23 08:45:47  
 Humidity:50%  
 Remarks:1 unidad



			Graphic shift(%)	
Hue Bin	Hue Angle	Rf	Chroma	Hue
1	0.0° - 22.5°	89	-4	0
2	22.5° - 45.0°	91	-2	2
3	45.0° - 67.5°	91	-1	4
4	67.5° - 90.0°	94	-2	0
5	90.0° - 112.5°	96	0	2
6	112.5° - 135.0°	96	1	1
7	135.0° - 157.5°	95	-1	-1
8	157.5° - 180.0°	98	0	0
9	180.0° - 202.5°	94	-1	2
10	202.5° - 225.0°	91	-1	5
11	225.0° - 247.5°	90	3	6
12	247.5° - 270.0°	90	3	2
13	270.0° - 292.5°	89	3	-7
14	292.5° - 315.0°	83	2	-9
15	315.0° - 337.5°	89	0	-5
16	337.5° - 360.0°	85	-4	-7

Model:Spotia Zomm CTT negro  
 Tester:Sergio Carneros  
 Temperature:20Deg  
 Manufacturer:Luz Negra

Number:3000K 50° Panal de abeja  
 Date:2026-03-23 08:45:47  
 Humidity:50%  
 Remarks:1 unidad